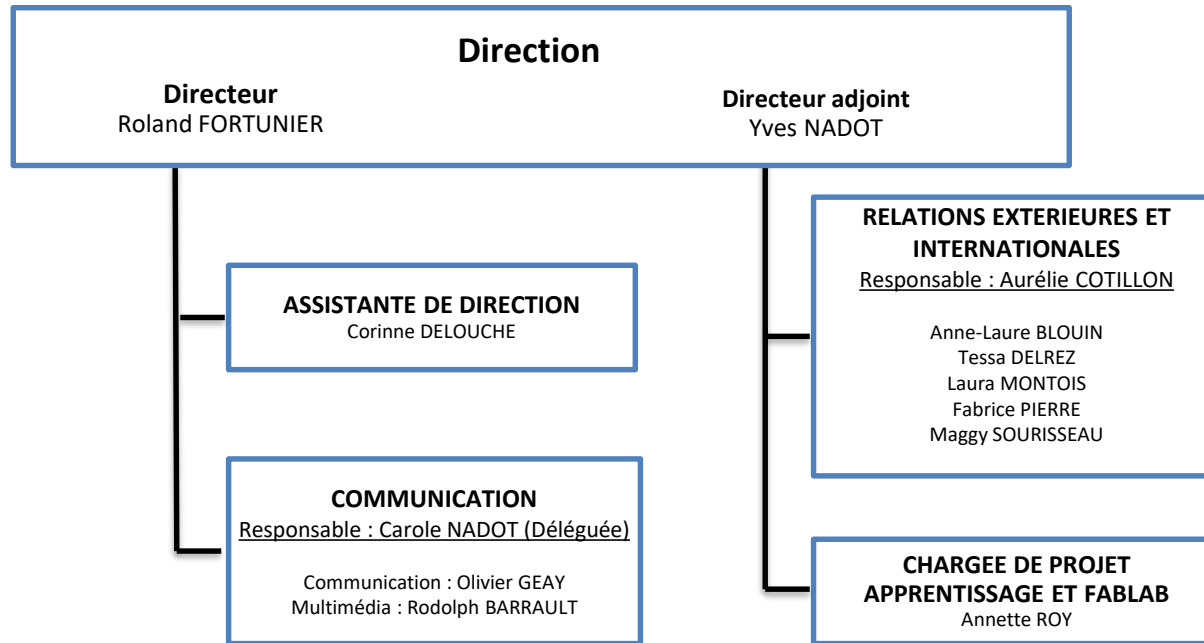


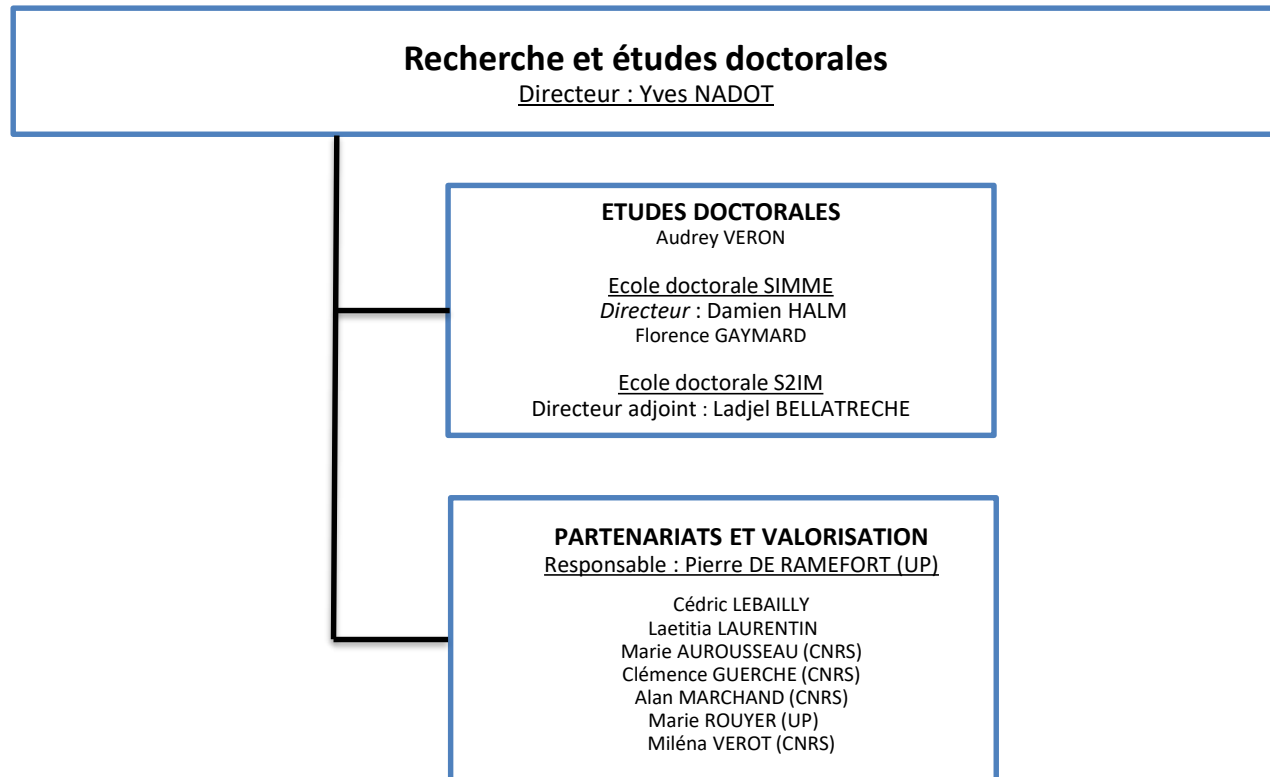
 *Conseils et Commissions*

 *Services et Délégations*

 *Chargés de Mission*







Etudes et formations

Directeur : Laurent PERAULT

Directeur adjoint : Michaël RICHARD

SCOLARITE

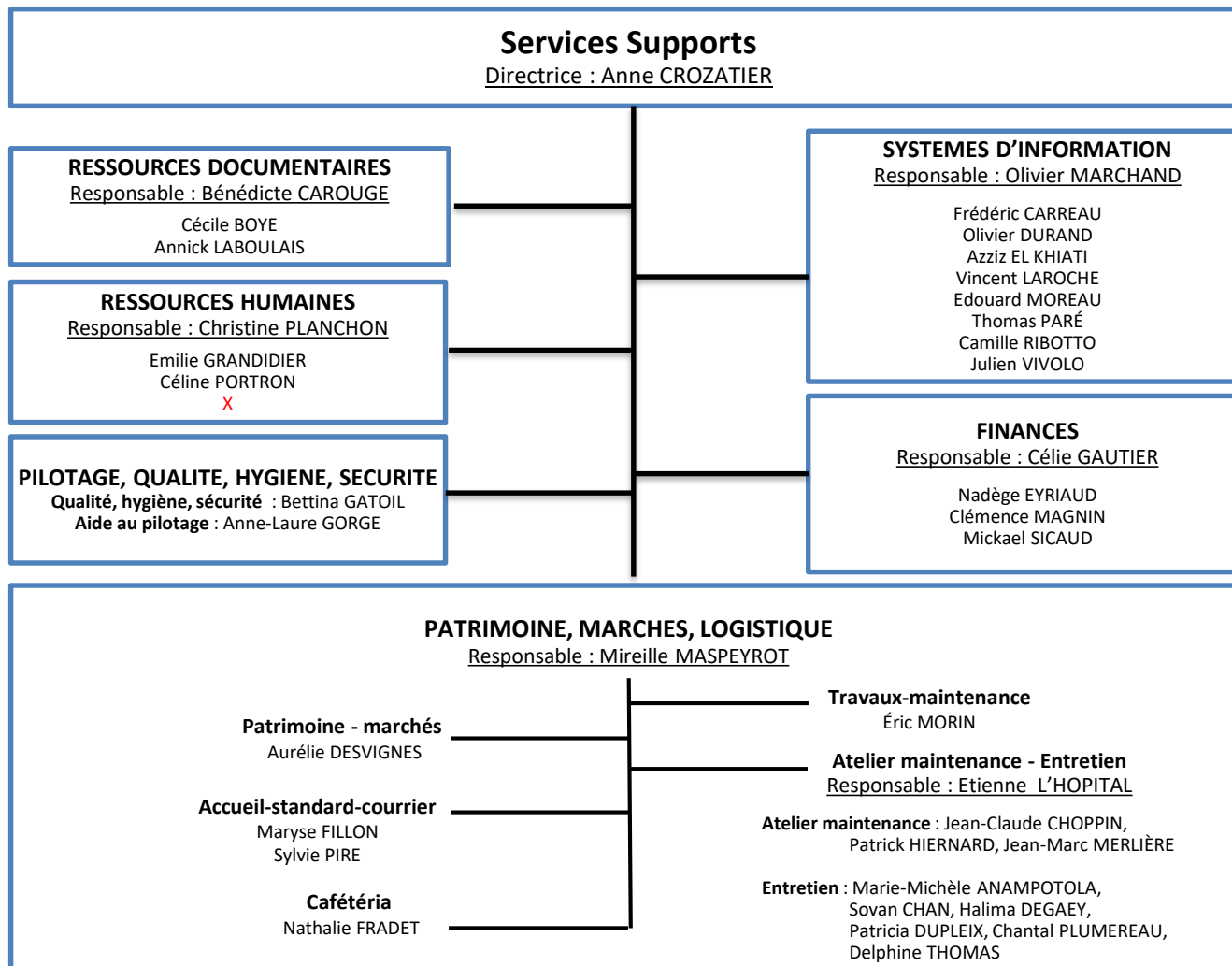
Responsable : Corinne DUTAULT

Isabelle EL KHIATI

Isabelle GROGNET

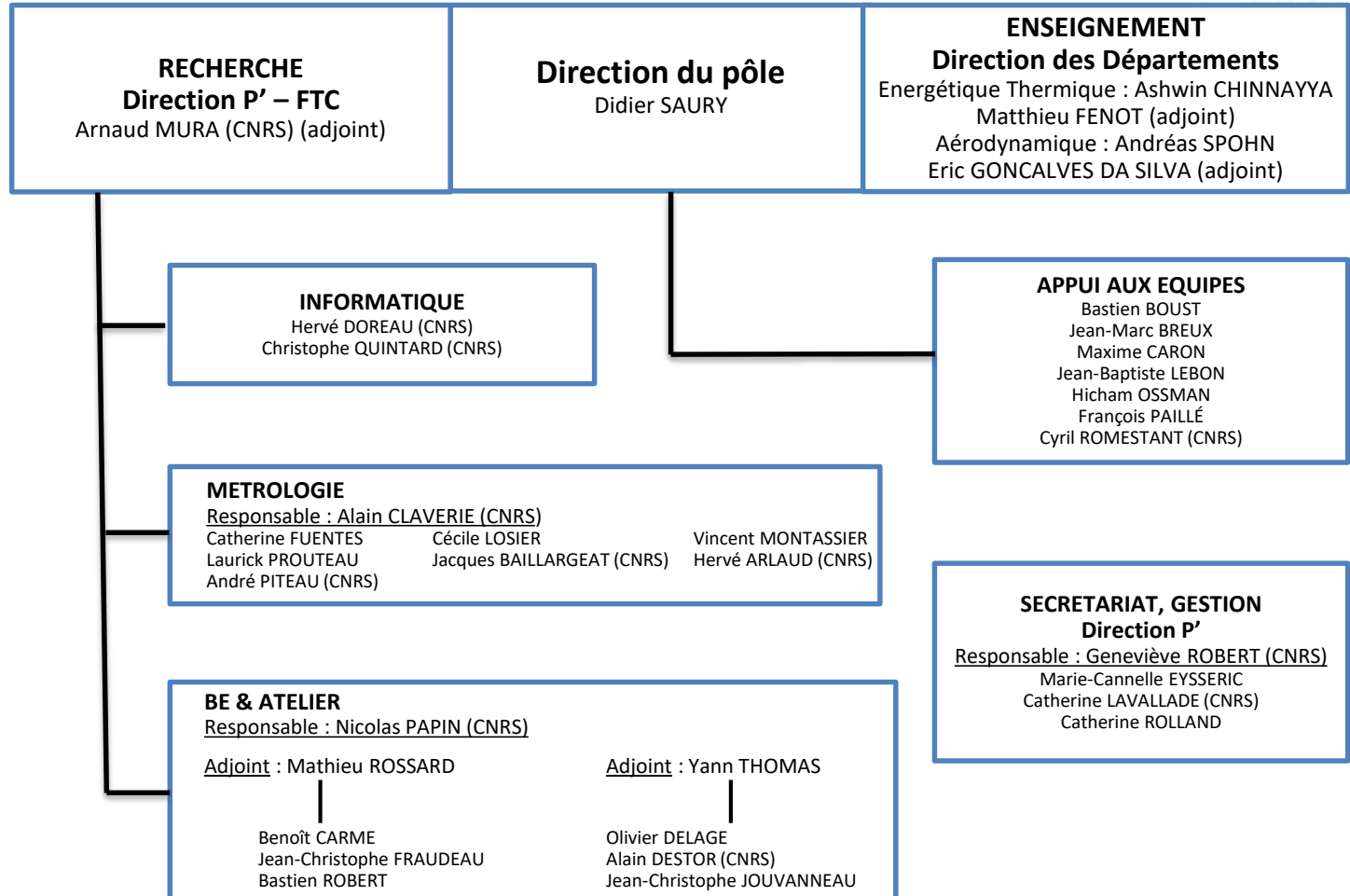
Aurélie RODRIGUEZ



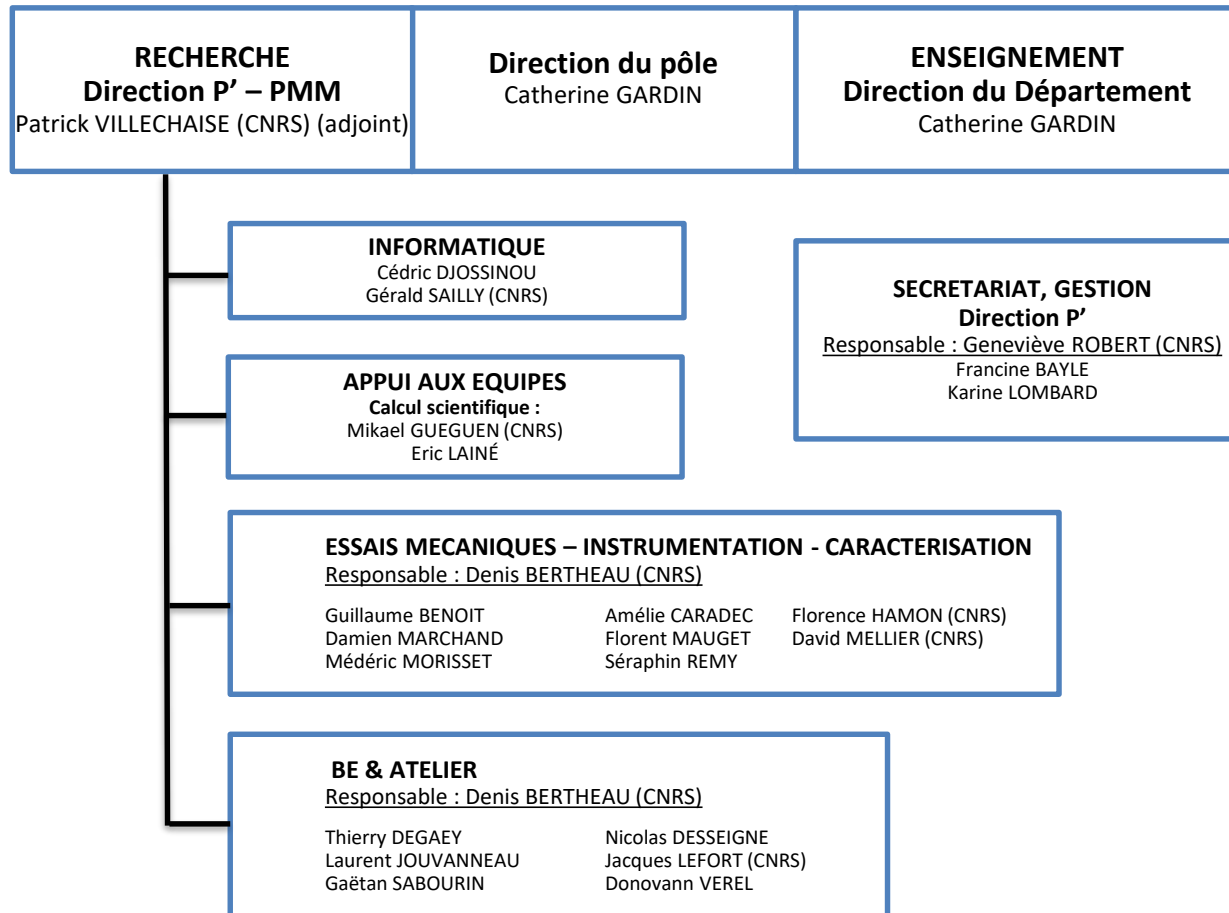


PÔLE AET

Aérodynamique, Energétique, Thermique



PÔLE SMA Structures, Matériaux Avancés



PÔLE IA Informatique, Avionique

